



Trimble Works Plus Subscriptions

Get hardware covered by warranty, always up-to-date software, and world-class service and support — all for a predictable monthly price.



Adopt construction technology faster and more affordably

Construction technology increases accuracy and efficiency but typically requires a substantial upfront investment. Traditional purchasing models require you to manage warranties and budget for upgrades. And then there's the worry that your new technology will become outdated the day you start to use it.

With a **Trimble® Works Plus subscription**, you can acquire the latest technology for your fleet of machines and survey crew with little to no upfront costs. You can have hardware and software that always has the most up-to-date and advanced features. And you can streamline your budget with predictable, affordable, regular monthly or annual payments.

Transform the way you buy construction technology with the first and only subscription that combines hardware, software and support in one fixed-price package: the Trimble Works Plus subscription.



Your path to tech without trouble



Choose the mix of machine control, site surveying systems and office software that you need.



Get started with installation, training and support from the Trimble network of authorized dealers.



Keep up with rapid technology development with automatic software updates and included hardware upgrades.



Avoid downtime with repair and replacement of accidentally damaged equipment and cables — labor included.



Make fixed monthly payments and free your capital for other initiatives.

Trimble tech, your terms

Whether you need machine control, site surveying, office software or some of everything, you pick the right combination and quantity for your business. Contracts are available in yearly installments from 18 to 72 months, so you can find the fixed monthly payment that matches your budget.



Included with every subscription

Technology Assurance

Receive hardware upgrades, automatic software updates and accidental damage repair.

Trimble WorksManager (single license)

Transfer data to and from devices in the field.

Trimble WorksOS (single license)

Remotely monitor jobsite activity and real-time progress to plan.

World-class service and support

Rely on installation, training and maintenance from the Trimble network of authorized providers.

Site surveying system options

Data collector and rover

Best-in-class Trimble construction survey system.

Universal Total Station

Highest degree of accuracy for precision operations.

Data collector

Rugged controllers for GNSS or total station operations.

Base stations

Trimble base station for reliable reference data.

Office software

Trimble Business Center

Transform field data into high-quality, actionable information and client deliverables.

Machine control options

Single machine type

Move your grade control system across similar machine types.

Flexible machine types

Move your grade control system to other machine types in your fleet.

Machine kits

Prepare any machine for grade control at any moment.

In-cab kits

Outfit your machines with grade control system GNSS receivers and in-cab displays.

Add-on packages

Augmented reality (excavators only)

View 3D models in the context of existing surroundings.

Auto excavator (hydraulic kit)

Automatically control boom and bucket, guiding to 3D models or 2D surfaces.

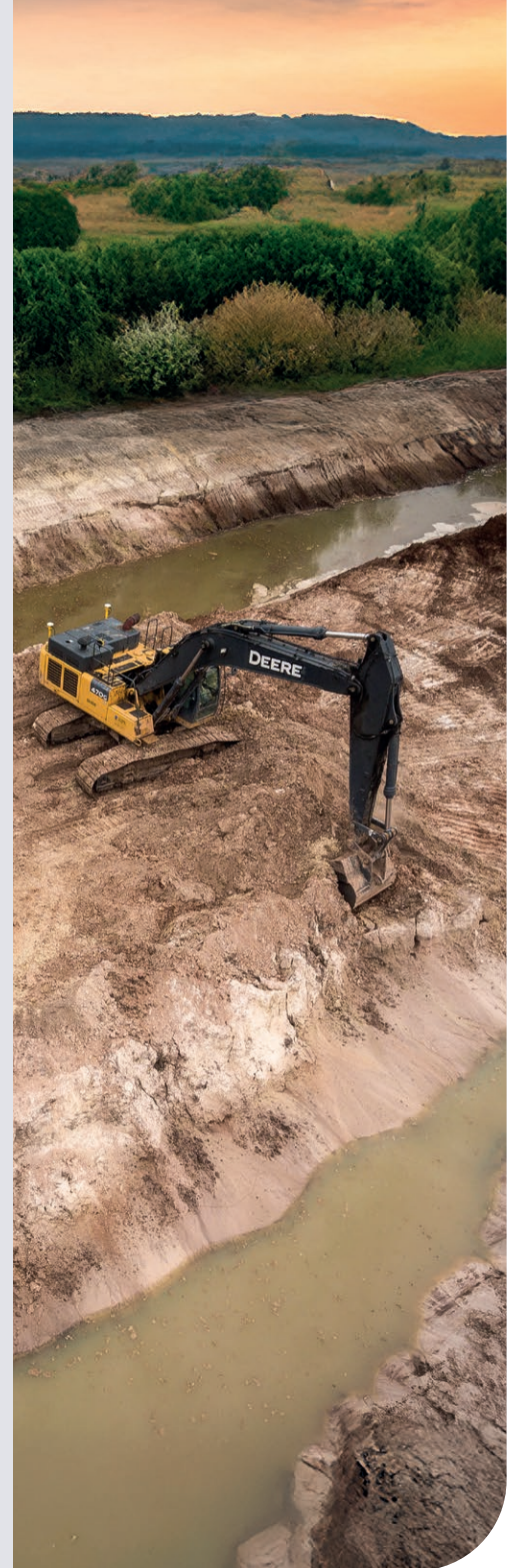
Siteworks machine guidance

Get to grade the first time, eliminating guesswork and rework.

Transform your business and your budget

A Works Plus subscription makes acquiring construction software and hardware easier than ever — opening the doors to increased predictability, productivity and profitability.

- ✓ Minimize downtime and rework.
- ✓ Generate more accurate bids.
- ✓ Count on a low, fixed-price payment schedule.
- ✓ Complete projects faster.
- ✓ Standardize technology across your fleet.
- ✓ Enhance your productivity and upskill your operators.
- ✓ Reduce maintenance and repair costs.
- ✓ Simplify technology management.



civilconstruction.trimble.com

Trimble Civil Construction

10368 Westmoor Drive
Westminster, CO 80021
USA



© 2025, Trimble Inc. All rights reserved. Trimble and the Globe & Triangle logo are trademarks of Trimble Inc., registered in the United States and in other countries. All other trademarks are the property of their respective owners. PN 022482-4454 (04/25)